



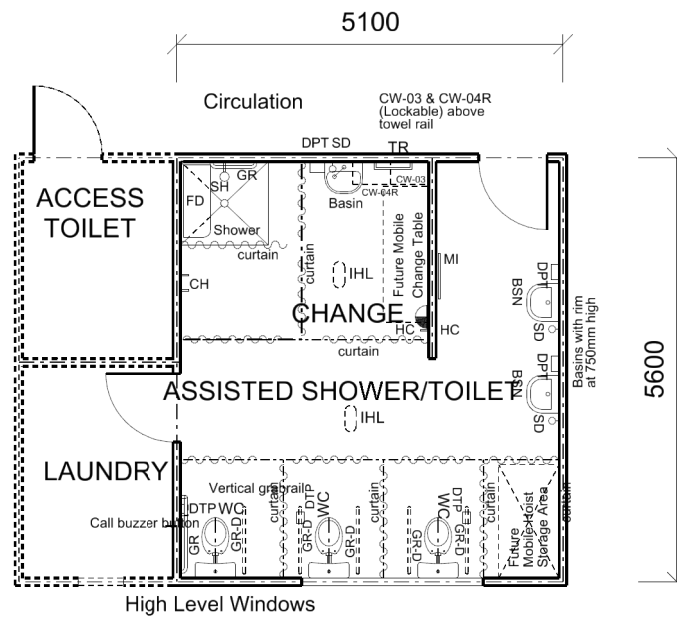
SCHOOL TYPE
KEY LEARNING / SUPPORT AREA
ROOM / SPACE
TYPE / ID

Schools for Specific Purposes
Student Services Unit
Laundry
Type 4 - SSP603.22

SCHEDULE AREA 6m²

NOTES

1 For three to four HBs



Floor Area shown 28.55 q.m

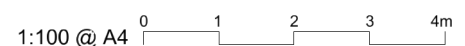
FIXTURES

ID	QUANTITY
LT	1

FURNITURE

ID	QUANTITY
CW-08	1
T-250	1

Furniture quantities are indicative and are related to the floor plan indicated. Actual furniture selection and quantities will be dependent on the approved design, specific school needs, student ages, student capabilities and their teachers.



REVISION DATE
19 DECEMBER 2013

The information on this sheet once printed/exported is classed as an uncontrolled copy. The currency of the information should be checked by visiting the EFSG website prior to using the information for any purposes.