



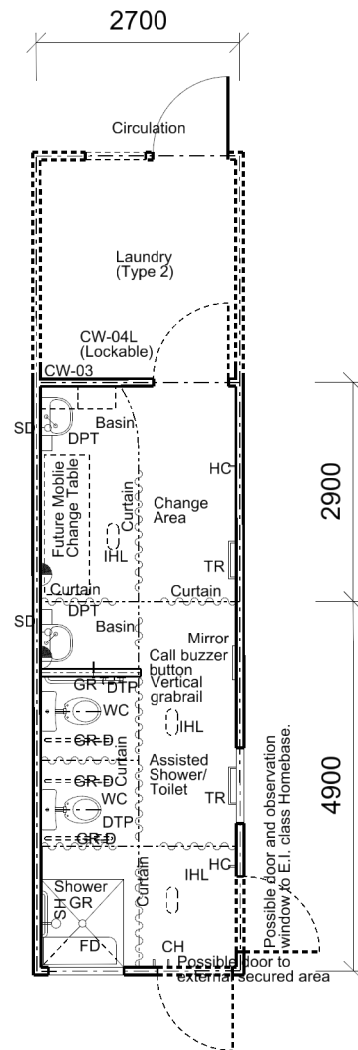
SCHOOL TYPE
KEY LEARNING / SUPPORT AREA
ROOM / SPACE
TYPE / ID

Schools for Specific Purposes
Student Services Unit
Laundry
Type 3 - SSP603.21

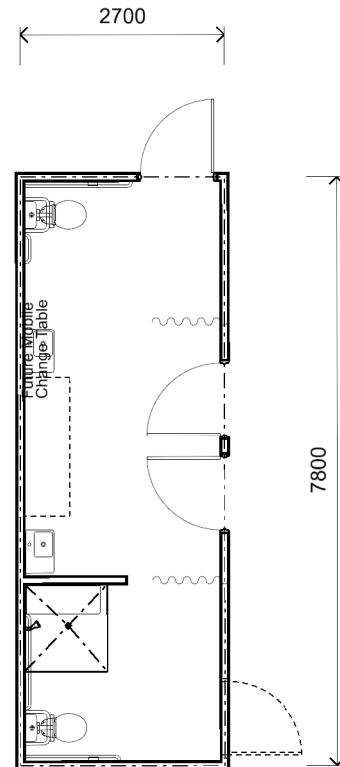
SCHEDULE AREA 6m²

NOTES

- 1 For one to two HBs
- 2 Circulation and movement of equipment important.



Floor Area shown 21.06 sq.m
2012 VERSION



2013 VERSION - Compliant

FIXTURES

ID	QUANTITY
LT	1

FURNITURE

ID	QUANTITY
CW-08	1
T-250	1

Furniture quantities are indicative and are related to the floor plan indicated. Actual furniture selection and quantities will be dependent on the approved design, specific school needs, student ages, student capabilities and their teachers.

REVISION DATE
19 DECEMBER 2013

The information on this sheet once printed/exported is classed as an uncontrolled copy.
The currency of the information should be checked by visiting the EFSG website prior to using the information for any purposes.

1:100 @ A4 0 1 2 3 4m