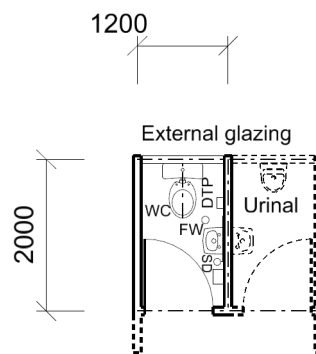




SCHOOL TYPE
KEY LEARNING / SUPPORT AREA
ROOM / SPACE
TYPE / ID

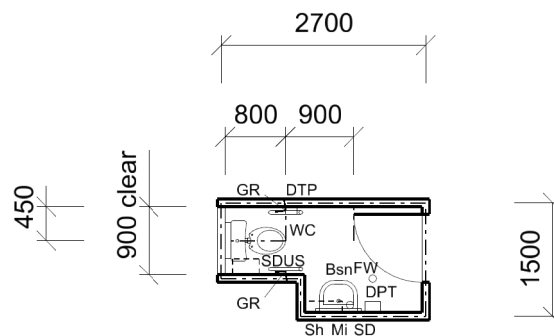
Schools for Specific Purposes
Student Services Unit
Toilets - Boys / Girls - Single
SSP603.02

SCHEDULE AREA 2m²



Circulation

Floor Area shown 2.09 sq.m



Ambulant - Floor Area shown 3.1 sq.m

FIXTURES	
ID	QUANTITY
WC	1
BSN	1
SD	1
DTP	1
DPT	1
MI	1

Furniture quantities are indicative and are related to the floor plan indicated. Actual furniture selection and quantities will be dependent on the approved design, specific school needs, student ages, student capabilities and their teachers.

1:100 @ A4 0 1 2 3 4m

REVISION DATE
19 DECEMBER 2013

The information on this sheet once printed/exported is classed as an uncontrolled copy.
The currency of the information should be checked by visiting the EFSG website prior to using the information for any purposes.