

DRAFT **Standard Hub Layouts** Primary Schools

Version 1.0 - Examples for reference



DRAFT

Please contact the SINSW Design and Technical Standards team if you have any comments or queries on this package

Last Update: June 9, 2021

Why are we doing this?

- Consistent approach across all new school projects (and new school buildings)
- Less time spent in design development
- Product that is aligned with contemporary pedagogy (flexible learning environments) and backed by research evidence
- Design solution that allows for off-site manufacturing and assembly via Modern Methods of Construction
- Provides design principles that can be applied to existing schools where upgrade projects are proposed

OVERVIEW

Example Hub Layouts : Primary Schools

This package provides standard hub layouts for each core facility and learning space required within a primary school.

This package is intended to guide the development of master plans and concept design for new schools and new school buildings. The design principles that accompany each layout should be used as a guide for upgrade projects.

The core facilities have been simplified into 3 categories : small, medium and large.

The spaces have been designed to fit within the planning grid of 9m x 7.5m to allow for Modern Methods of Construction (MMC), whether via a volumetric or 'kit of parts' approach. The areas have been determined in alignment with the existing Schedule of Accommodation.

The layouts have been designed efficiently and demonstrate a reduction in internal areas purely for the purpose of movement, and the provision of floor space that is able to be accessed appropriately and used flexibly.

The hub layouts have been developed to align with contemporary pedagogy (flexible learning environments) and developed in collaboration with SINSW subject matter experts. A set of design principles accompanies each plan to clarify the intent of the layout and highlight important considerations for the design.

In addition to the hub layouts, a functional relationships diagram explains key adjacencies between hubs, neighbourhoods and general operation of the school. This should be used to guide the development of master plans for new schools and may also be referred to when new school buildings are being proposed on existing school sites.

This document should be used alongside the Master Planning Guidelines for Schools, accessible via the EFSG website.

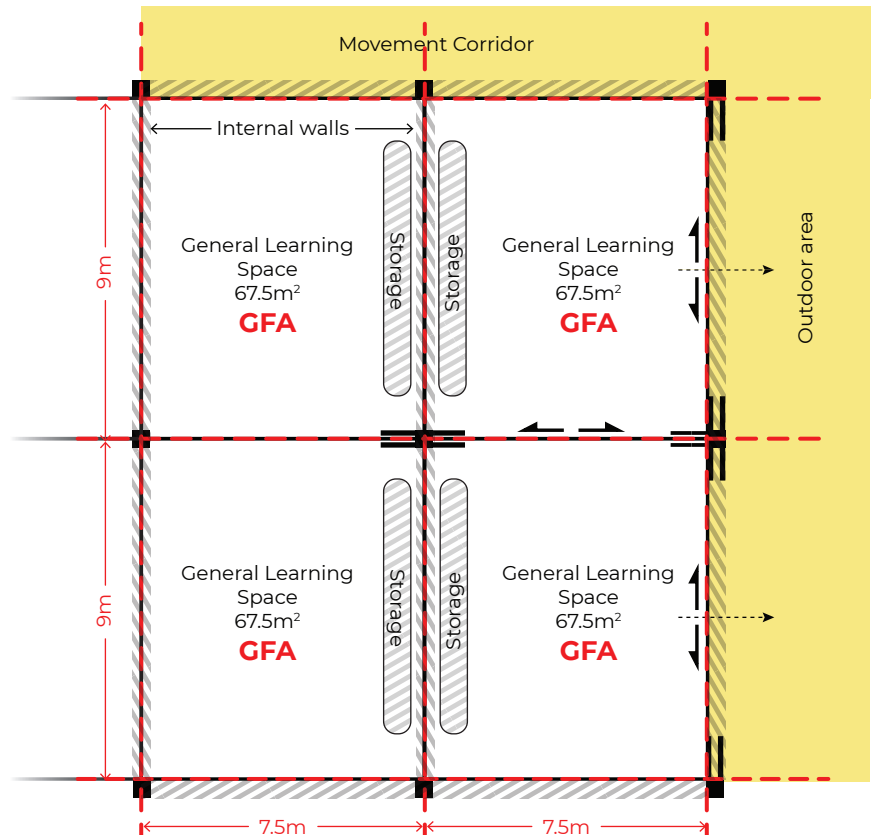
DRAFT



EXAMPLE LAYOUT

Example Hub Layout – School Infrastructure NSW, May 2021

Application of the planning grid



Legend

- Planning/structural gridlines
 - Indicative column placement
 - Indicative wall/window/door areas
 - Indicative area of storage componentry
 - Movement areas/outdoor space
- Areas not included UFA*

Acronyms + Definitions

Floor Areas

FECA	Fully Enclosed Covered Area	Includes all spaces that are enclosed with a roof, a façade and a floor slab. Including internal stairs, engineering, plant and circulation
GFA	Gross Floor Area	Gross floor area is the sum of the floor area of each floor of a building, measured from the internal face of external walls, or from the internal face of walls separating the building from any other building. GFA combines the area of UCA and FECA NOTE: Areas shown on Example Layout plans are indicative of Gross Floor Area - this does not account for wall thickness, columns, and other non-useable space
UCA	Unenclosed Covered Area	Includes all spaces that have a roof and a slab but are unenclosed (without a façade). This includes circulation, Outdoor Learning Commons and covered outdoor spaces that are bounded by balustrades or perforated mesh
UFA	Useable Floor Area	Space that can be physically accessed and used, excluding circulation, engineering, outdoor space, toilets, plant, etc NOTE: EFSG Schedules of Accommodation indicate the UFA required for each space

Spaces

GLS	General Learning Space
LC	Learning Commons
OLC	Outdoor Learning Commons

Example Hub Layouts

Primary School

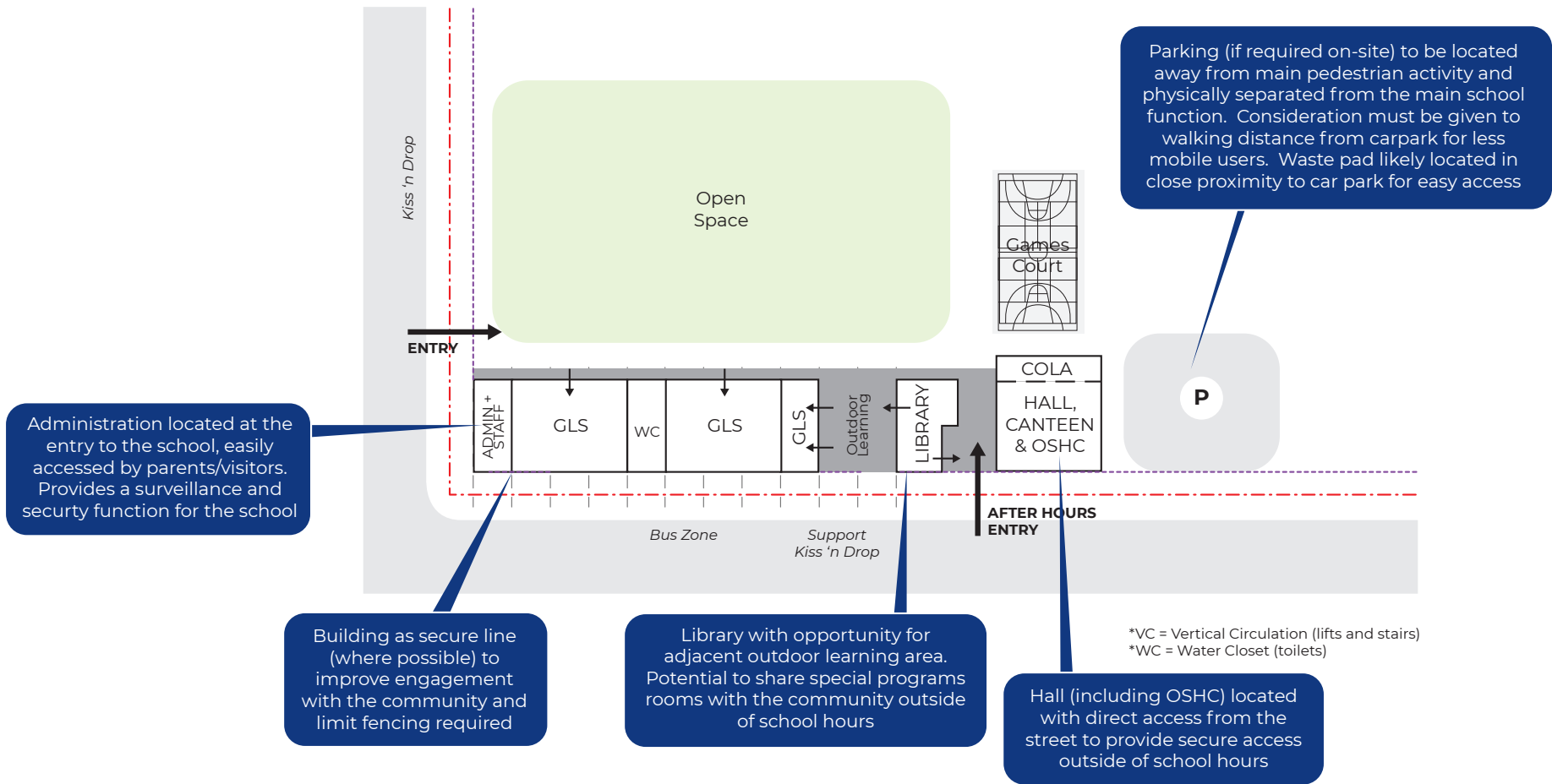
Small / Core 7

DRAFT



EXAMPLE LAYOUT

Example Hub Layout – School Infrastructure NSW, May 2021



DRAFT

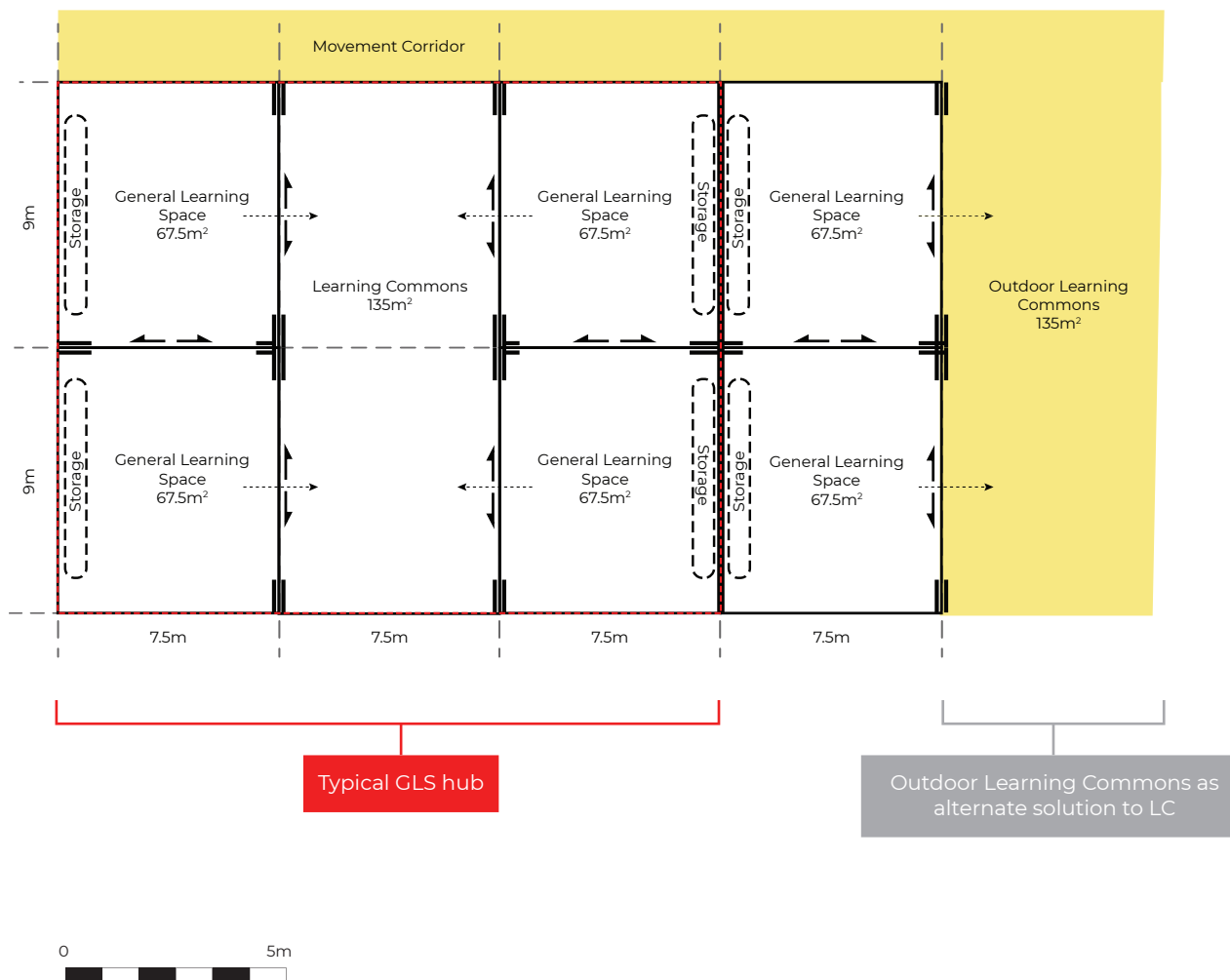


EXAMPLE LAYOUT

Example Hub Layout – School Infrastructure NSW, May 2021

Functional Relationships Primary (Small/Core 7)

Indicative primary school layout demonstrating desirable adjacency of spaces and general master planning principles.



General Learning Space Hub Primary

Learning Commons

- Learning Commons to be directly accessible by 4 General Learning Spaces
- This area can be divided into zones such as practical activities areas, break out spaces, seminar rooms and the like
- Learning Commons can also be provided as an Outdoor Learning Commons which operates in a similar manner in an outdoor covered and weather protected environment.

General Learning Spaces

- Minimum GLS area is 60sqm clear (UFA)
- The total number of GLS provided is to be determined based on enrolment projections
- Storage to be included within the GLS as cabinetry (min 6m² per GLS or equivalent 20 lineal metres of shelving).

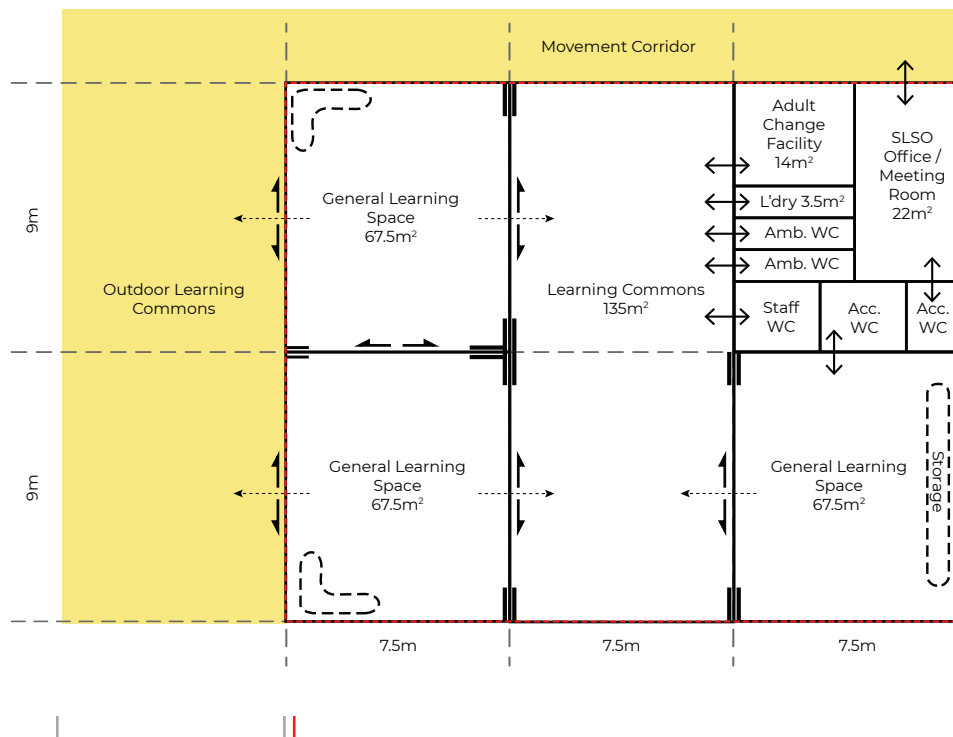
DRAFT



EXAMPLE LAYOUT

Example Hub Layout – School Infrastructure NSW, May 2021

	Small PS 230 students	Medium PS 550 students	Large PS 1,000 students
Number of GLS required	10 GLS + Support Learning Hub (as required)	24 GLS + Support Learning Hub (as required)	44 GLS + Support Learning Hub (as required)
Number of LC required	3	6	11



Outdoor Learning Commons adjacent may be a desirable solution

Typical GLS hub



DRAFT

EXAMPLE LAYOUT



Example Hub Layout – School Infrastructure NSW, May 2021

Support Learning Hub Primary and Secondary

Learning Commons

- This area may be divided into zones for practical activities, break out spaces, sensory rooms, therapy spaces, life skills spaces such as kitchens, and the like.
- Outdoor Learning Commons adjacent to the Support Learning Hub may be desirable as an alternate, quieter recreation space.
- Generous storage to be provided (as cabinetry) to allow for bulky mobility devices or medical equipment to be stored. Recommended to provide 8sqm for student personal effects and 6sqm lockable storage for teaching supplies within each GLS.
- Retreat zones may be included within the GLS to provide students with a safe space to move to if a situation is stressful or to self-manage emotions.

Student Amenities

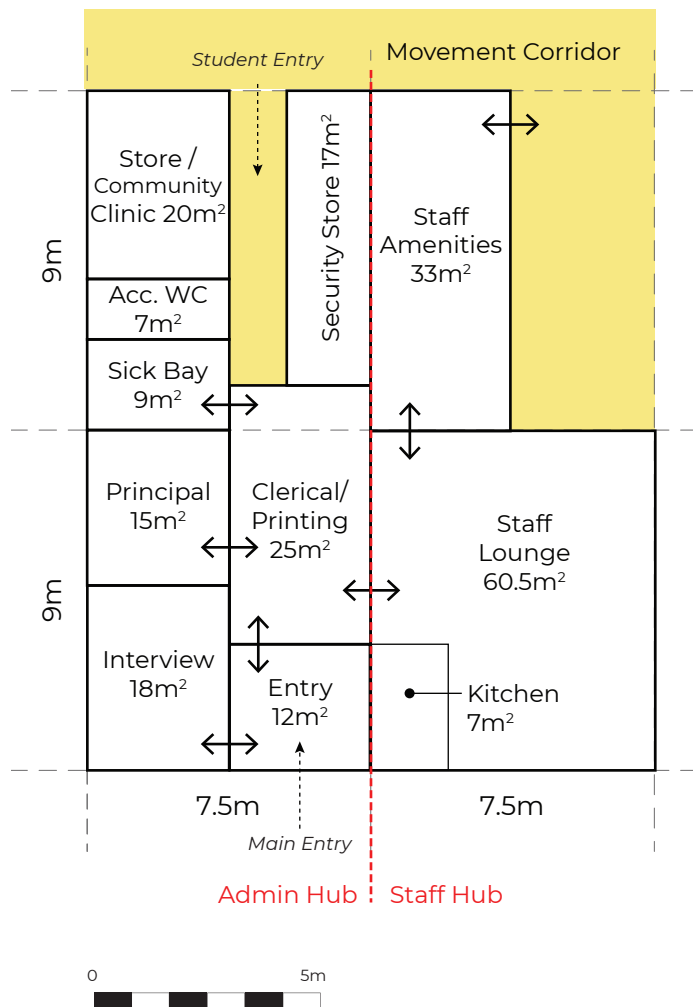
- Student amenities have direct access from the Learning Commons with line of sight from 2 GLS spaces. This arrangement allows students to independently use sanitary facilities whilst maintaining passive supervision from staff.
- 1 GLS has direct access to an accessible sanitary facility to maintain a line of sight from all GLS spaces.
- An adult change facility provides for students with high support needs and students who might require additional space. Access can be provided from the Learning Commons and/or movement corridor.
- A unisex accessible sanitary facility, male and female ambulant facilities and a laundry to be provided also.

Staff Amenities

- An office for the School Learning Support Officer (SLSO) is provided for use during free periods, to undertake administrative tasks and store items, including confidential records.
- The SLSO Office also provides a private meeting space for parents.
- The SLSO Office also provides an opportunity for surveillance of the Support Unit entry / exit doors and common areas.
- Staff sanitary facilities have been within close proximity of the Support Hub.

Important note on support classes

The requirements of every support class will be different depending on the student profile and varying needs of the students who enroll at the school. For this reason, it is important that the standard design for support learning areas is as flexible as possible, and customised by way of zones (including furniture, fit out and equipment (FF&E)) to suit the needs of the students attending the school. These requirements may change year on year as new students come and go. The FF&E should be designed to allow flexibility and change with relative ease if required.



Administration and Staff Hub Primary (Small/Core 7)

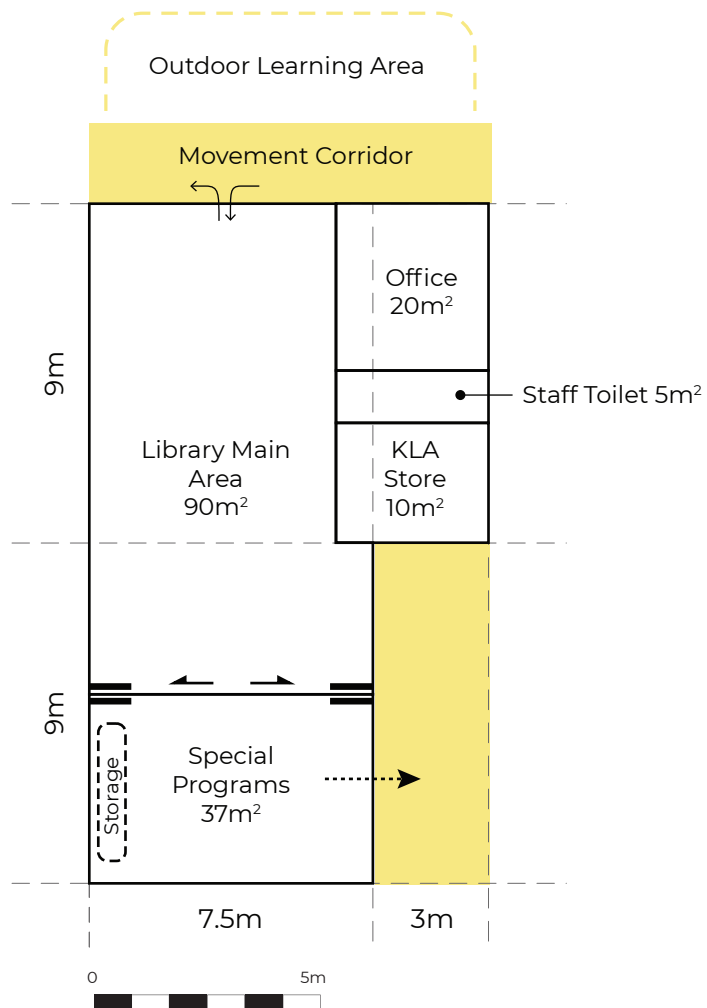
- Admin block to be located at the main school entry.
- Entry vestibule area is to be accessible to general public, with direct access from the main entry. It needs to include direct access to clerical/printing/workroom space and direct access to minimum one dual access interview rooms.
- Clearly defined security line is mandatory requirement for admin block layouts. It establishes publicly accessible areas within the admin block and creates secure zone for staff and students.
- Dual access interview room provides access to school visitors and safe access for school staff, allowing direct link between interview room and secure areas behind main security line.
- Student access to the admin block in the vicinity of the clerical area and sick bay is mandatory.
- Sick bay needs to be located in the close proximity to the accessible student toilet.
- All rooms in administration block are to be protected in accordance with *DG 39 Security Categories for Openings*.

DRAFT



EXAMPLE LAYOUT

Example Hub Layout – School Infrastructure NSW, May 2021

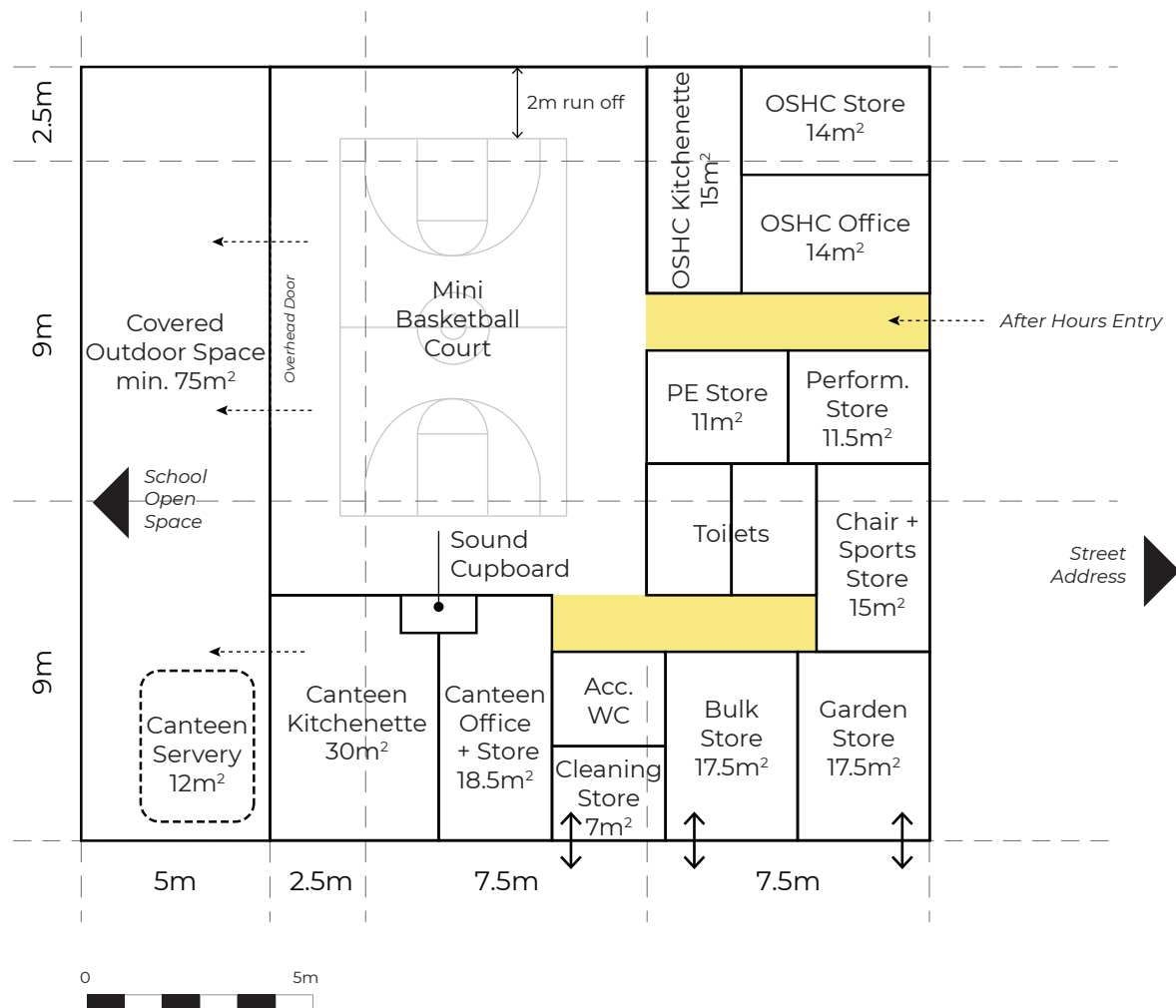


Library Hub

Primary (Small/Core 7)

- Single entry/exit point to main library space to ensure security of students and assets (eg. books) .
- Librarian loan/returns desk located near the main entry point with clear sight lines for efficient supervision of main library area.
- Office area to have direct access to staff toilets.
- Bag storage to be located at the entry to the main library space, without compromising circulation.
- Integration of Special Programs Unit with Library.
- Opportunity for shared use of Special Programs rooms with the community by providing access that is external to the main library area.
- Flexible use of Special Programs rooms provided - ability to open up adjoining rooms to create a larger space.
- Opportunity to create outdoor learning area adjacent to the library.

DRAFT



Hall, Canteen + OSHC Hub Primary (Small/Core 7)

- The Hall, Canteen and Out of School Hours Care (OSHC) facilities are consolidated within a single hub, due to their favourable intersection of uses.
- The size of the main hall area allows for functional use as a mini basketball court, at 10m x 6m plus 2m run-off on all sides.
- Covered Outdoor Space (also referred to as COLA) is a desirable addition to the hub, and with the addition of large sectional overhead doors, it provides:
 - the opportunity to 'spill out' during whole of school assemblies and other large events that are held in the hall;
 - weather protected outdoor play area that may be utilised by the OSHC; and
 - covered area the canteen servery.
- The OSHC should have secure access outside of school hours from the school's main entry and/or car park.
- The canteen kitchenette provides servery windows than open into the main hall area, as well as out into the Covered Outdoor Space. A suitable route for deliveries to the canteen should be considered.
- Bulk, Garden & Cleaning stores have been integrated into the hub. These store areas require access from the perimeter of the hall and suitable access routes provided to ensure heavy and bulky items can be easily maneuvered in and out.

DRAFT

Example Hub Layouts

Primary School

Medium / Core 21

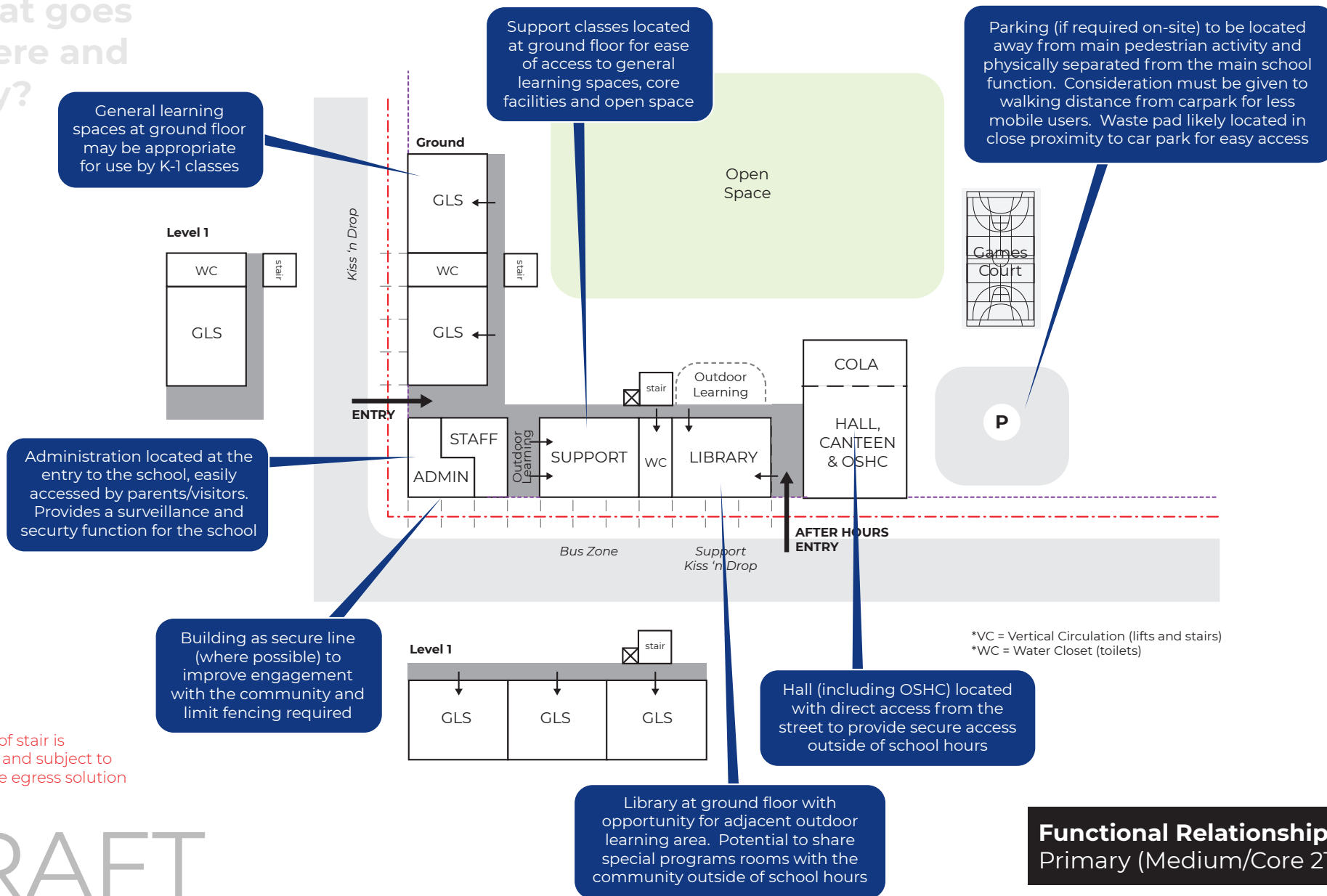
DRAFT



EXAMPLE LAYOUT

Example Hub Layout – School Infrastructure NSW, May 2021

What goes where and why?



Note: location of stair is indicative only and subject to appropriate fire egress solution

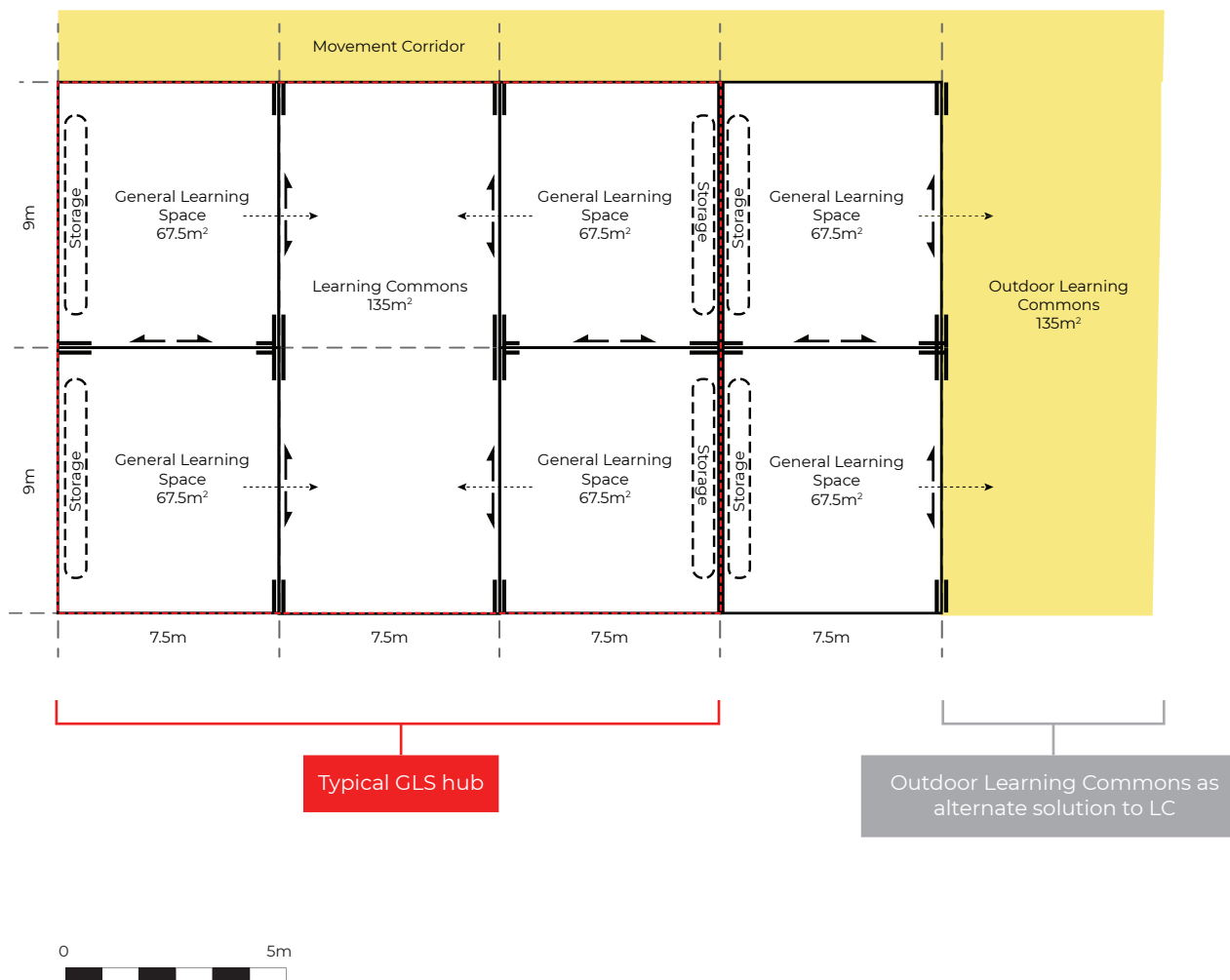
DRAFT EXAMPLE LAYOUT



Example Hub Layout – School Infrastructure NSW, May 2021

Functional Relationships Primary (Medium/Core 21)

Indicative primary school layout demonstrating desirable adjacency of spaces and general master planning principles.



General Learning Space Hub Primary

Learning Commons

- Learning Commons to be directly accessible by 4 General Learning Spaces
- This area can be divided into zones such as practical activities areas, break out spaces, seminar rooms and the like
- Learning Commons can also be provided as an Outdoor Learning Commons which operates in a similar manner in an outdoor (undercover) environment.

General Learning Spaces

- Minimum GLS area is 60sqm clear (UFA)
- The total number of GLS provided is to be determined based on enrolment projections
- Storage to be included within the GLS as cabinetry (min 6m² per GLS)

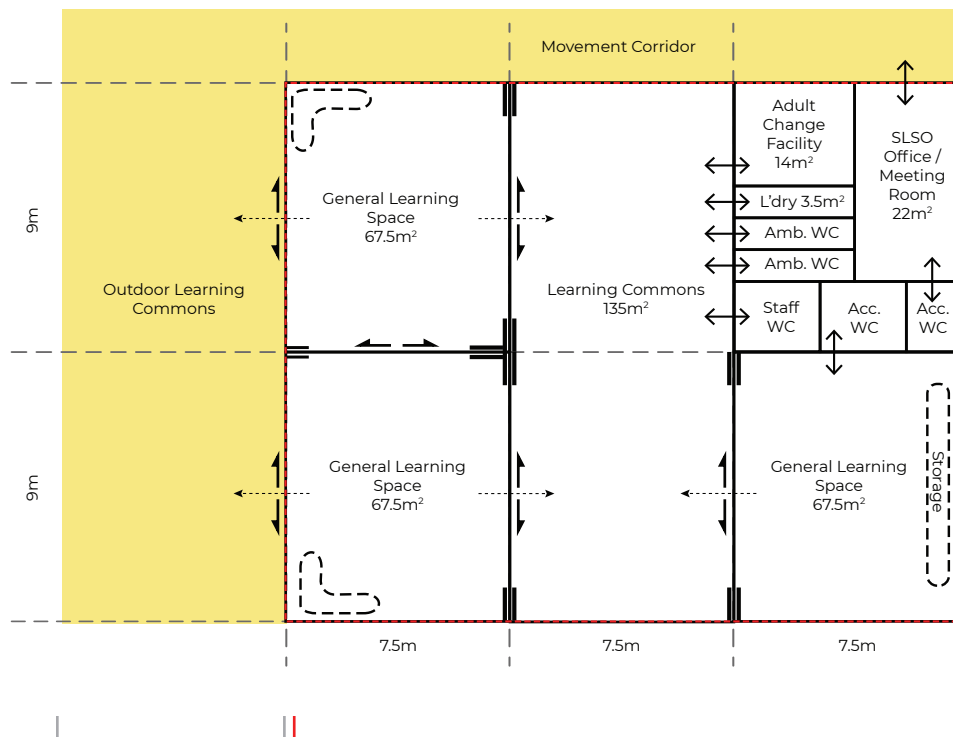
DRAFT



EXAMPLE LAYOUT

Example Hub Layout – School Infrastructure NSW, May 2021

	Small PS 230 students	Medium PS 550 students	Large PS 1,000 students
Number of GLS required	10 GLS + SLU (as required)	24 GLS + SLU (as required)	44 GLS + SLU (as required)
Number of LC required	3	6	11



Outdoor Learning Commons adjacent may be a desirable solution

Typical GLS hub



DRAFT

EXAMPLE LAYOUT



Example Hub Layout – School Infrastructure NSW, May 2021

Support Learning Hub Primary and Secondary

Learning Commons

- This area may be divided into zones for practical activities, break out spaces, sensory rooms, therapy spaces, life skills spaces such as kitchens, and the like.
- Outdoor Learning Commons adjacent to the Support Learning Hub may be desirable as an alternate, quieter recreation space.
- Generous storage to be provided (as cabinetry) to allow for bulky mobility devices or medical equipment to be stored. Recommended to provide 8sqm for student personal effects and 6sqm lockable storage for teaching supplies within each GLS.
- Retreat zones may be included within the GLS to provide students with a safe space to move to if a situation is stressful or to self-manage emotions.

Student Amenities

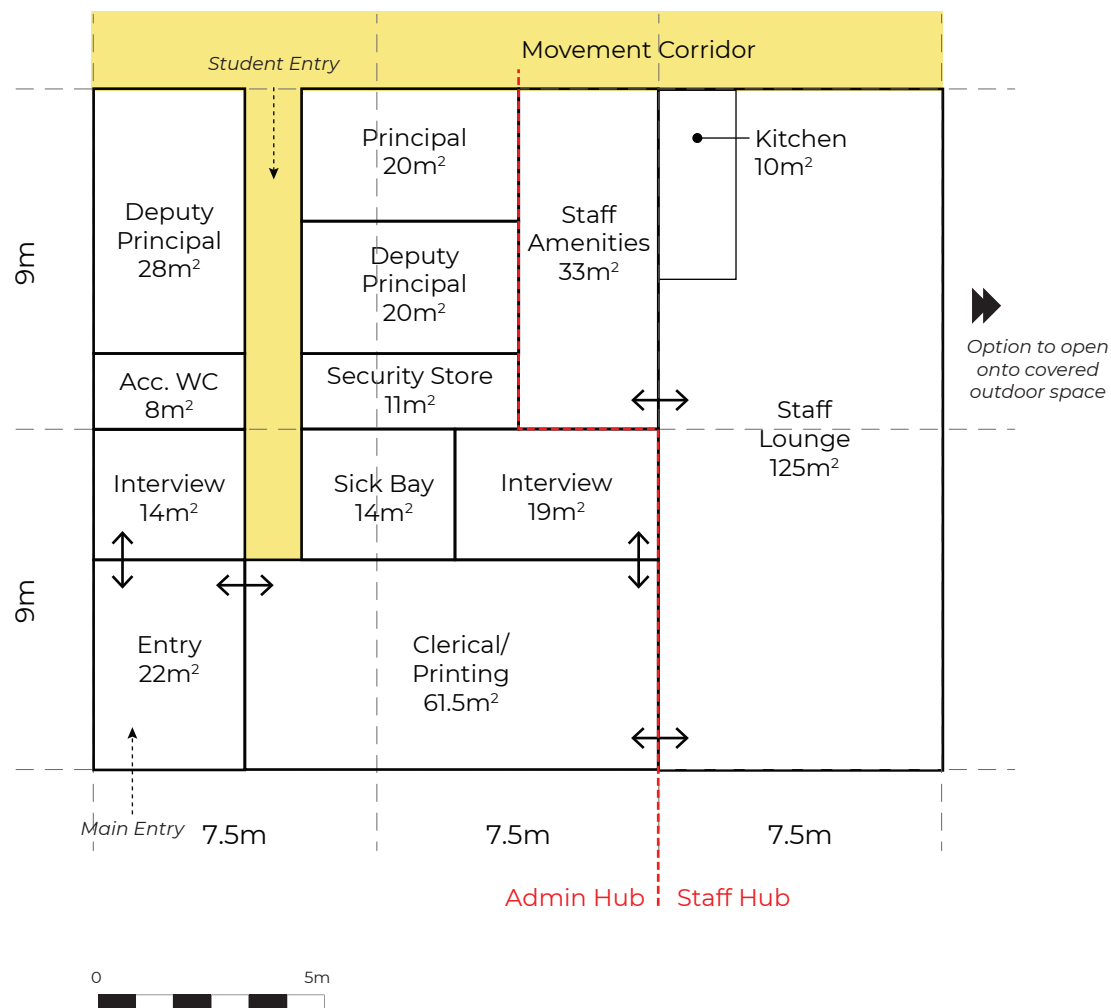
- Student amenities have direct access from the Learning Commons with line of sight from 2 GLS spaces. This arrangement allows students to independently use sanitary facilities whilst maintaining passive supervision from staff.
- 1 GLS has direct access to an accessible sanitary facility to maintain a line of sight from all GLS spaces.
- An adult change facility provides for students with high support needs and students who might require additional space. Access can be provided from the Learning Commons and/or movement corridor.
- A unisex accessible sanitary facility, male and female ambulant facilities and a laundry to be provided also.

Staff Amenities

- An office for the School Learning Support Officer (SLSO) is provided for use during free periods, to undertake administrative tasks and store items, including confidential records.
- The SLSO Office also provides a private meeting space for parents.
- The SLSO Office also provides an opportunity for surveillance of the Support Unit entry / exit doors and common areas.
- Staff sanitary facilities have been within close proximity of the Support Hub.

Important note on support classes

The requirements of every support class will be different depending on the student profile and varying needs of the students who enroll at the school. For this reason, it is important that the standard design for support learning areas is as flexible as possible, and customised by way of zones (including furniture, fit out and equipment (FF&E)) to suit the needs of the students attending the school. These requirements may change year on year as new students come and go. The FF&E should be designed to allow flexibility and change with relative ease if required.



Administration and Staff Hub Primary (Medium/Core 21)

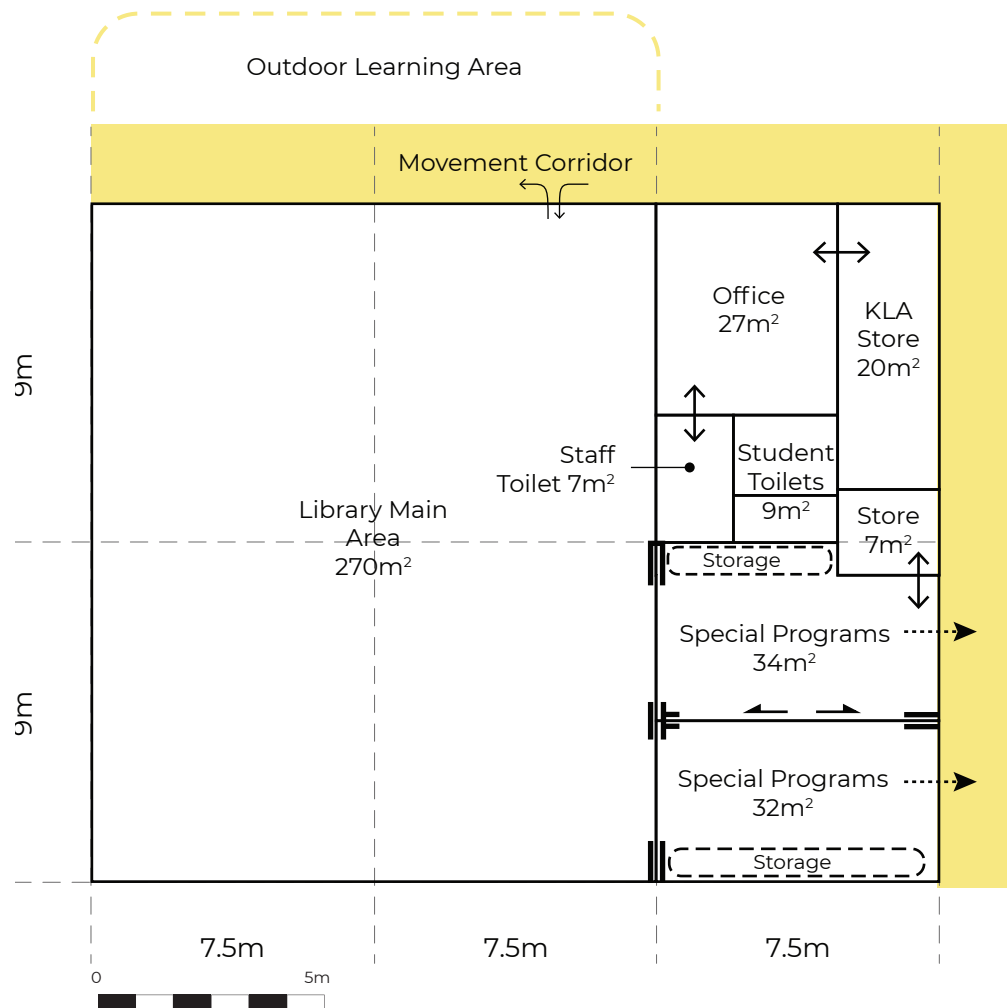
- Single entry/exit point to main library space to ensure security of students and assets (eg. books).
- Librarian loan/returns desk located near the main entry point with clear sight lines for efficient supervision of main library area .
- Office area to have direct access to staff toilets.
- Bag storage to be located at the entry to the main library space, without compromising circulation.
- Integration of Special Programs Unit with Library.
- Opportunity for shared use of Special Programs rooms with the community by providing access that is external to the main library area.
- Flexible use of Special Programs rooms provided - ability to open up adjoining rooms to create a larger space.
- Opportunity to create outdoor learning area adjacent to the library.

DRAFT



EXAMPLE LAYOUT

Example Hub Layout – School Infrastructure NSW, May 2021



Library Hub

Primary (Medium/Core 21)

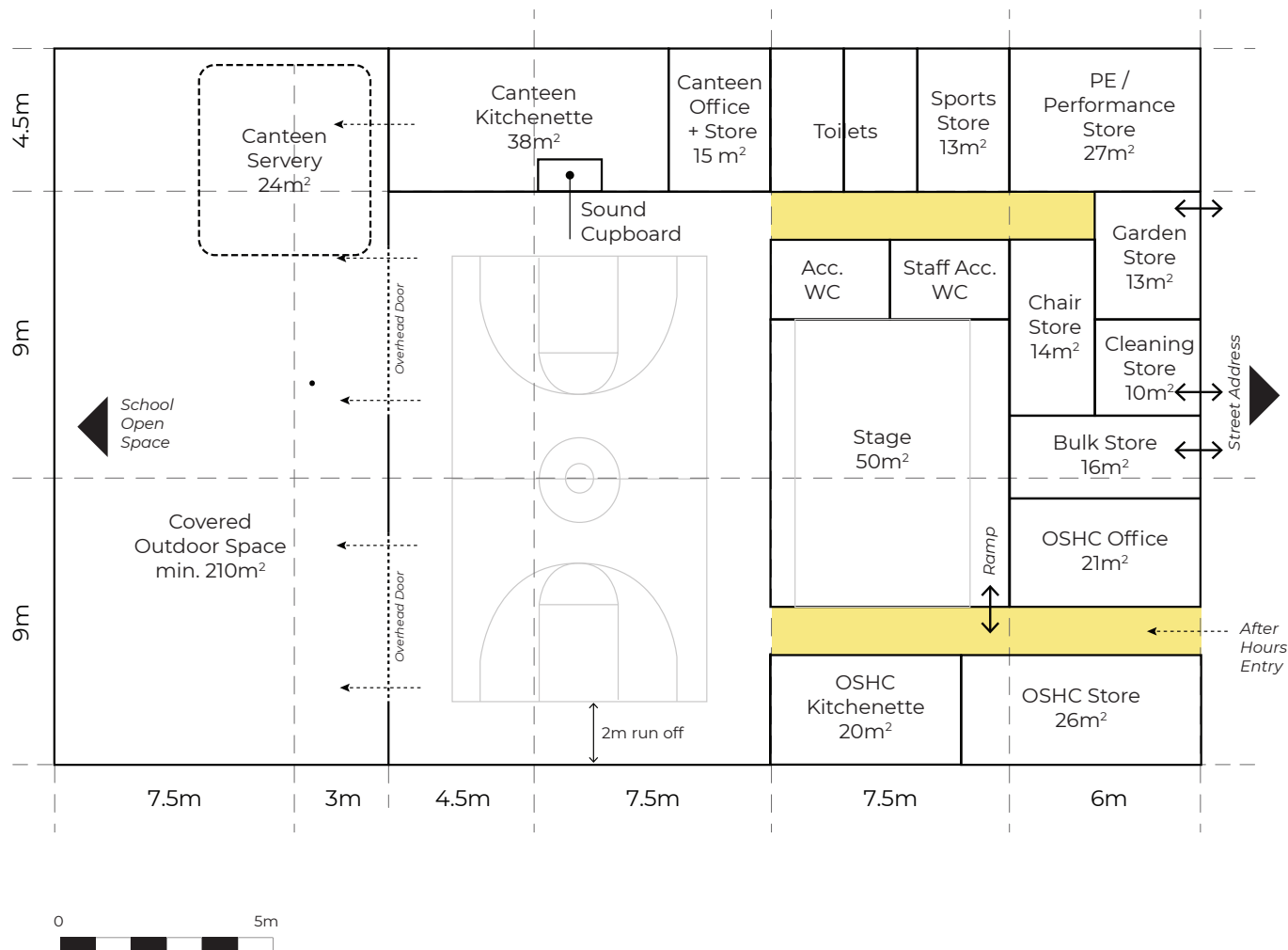
- Single entry/exit point to main library space to ensure security of students and assets (eg. books).
- Librarian loan/returns desk located near the main entry point with clear sight lines for efficient supervision of main library area.
- Office area to have direct access to staff toilets.
- Bag storage to be located at the entry to the main library space, without compromising circulation.
- Integration of Special Programs Unit with Library.
- Opportunity for shared use of Special Programs rooms with the community by providing access that is external to the main library area.
- Flexible use of Special Programs rooms provided - ability to open up adjoining rooms to create a larger space.
- Opportunity to create outdoor learning area adjacent to the library.

DRAFT



EXAMPLE LAYOUT

Example Hub Layout – School Infrastructure NSW, May 2021



Hall, Canteen + OSHC Hub Primary (Medium/Core 21)

- The Hall, Canteen and Out of School Hours Care (OSHC) facilities are consolidated within a single hub, due to their favourable intersection of uses.
- The size of the main hall area allows for functional use as a mini basketball court, at 14m x 8m plus 2m run-off on all sides.
- The hub incorporates a stage which may be utilised for various events such as assemblies and performance. The stage requires disabled access via a ramp.
- Covered Outdoor Space (also referred to as COLA) is a desirable addition to the hub, and with the addition of large sectional overhead doors, it provides:
 - the opportunity to 'spill out' during whole of school assemblies and other large events that are held in the hall;
 - weather protected outdoor play area that may be utilised by the OSHC; and
 - covered area the canteen servery.
- The OSHC should have secure access outside of school hours from the school's main entry and/or car park.
- The canteen kitchenette provides servery windows than open into the main hall area, as well as out into the Covered Outdoor Space. A suitable route for deliveries to the canteen should be considered.
- Bulk, Garden & Cleaning stores have been integrated into the hub. These store areas require access from the perimeter of the hall and suitable access routes provided to ensure heavy and bulky items can be easily maneuvered in and out.

DRAFT



EXAMPLE LAYOUT

Example Hub Layout – School Infrastructure NSW, May 2021

Example Hub Layouts

Primary School

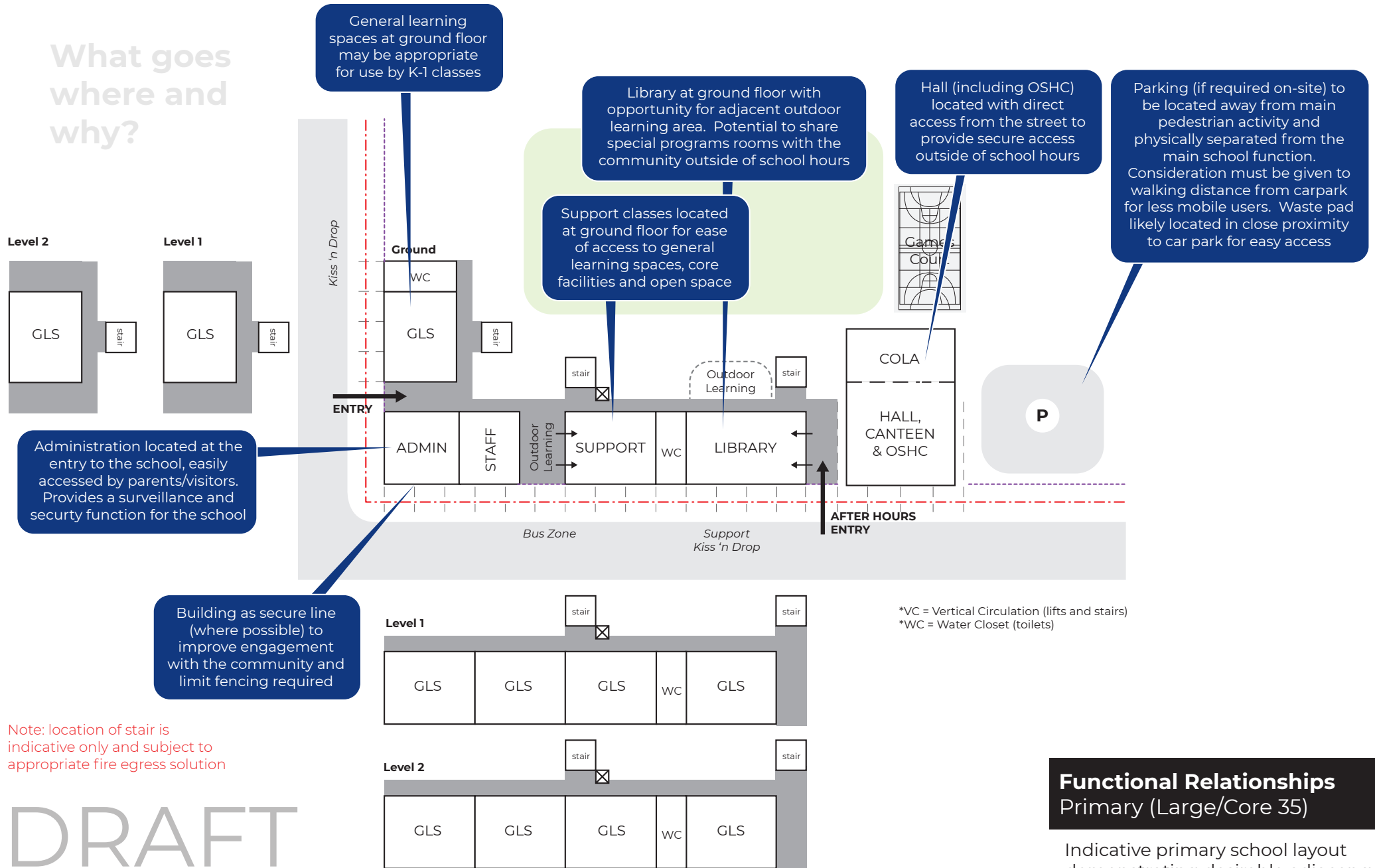
Large / Core 35

DRAFT



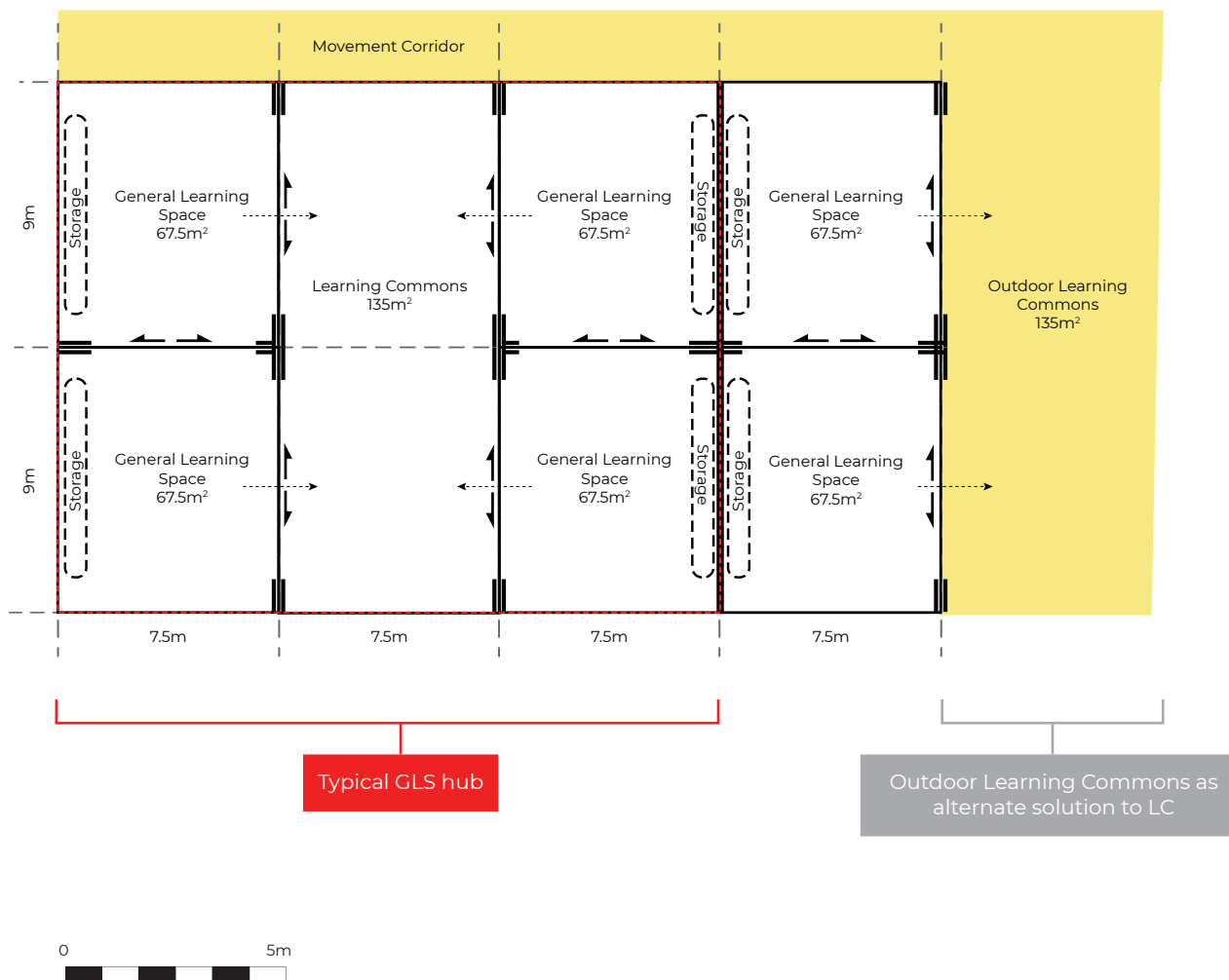
EXAMPLE LAYOUT

Example Hub Layout – School Infrastructure NSW, May 2021



Functional Relationships

Indicative primary school layout demonstrating desirable adjacency of spaces and general master planning principles.



General Learning Space Hub Primary

Learning Commons

- Learning Commons to be directly accessible by 4 General Learning Spaces
- This area can be divided into zones such as practical activities areas, break out spaces, seminar rooms and the like
- Learning Commons can also be provided as an Outdoor Learning Commons which operates in a similar manner in an outdoor (undercover) environment.

General Learning Spaces

- Minimum GLS area is 60sqm clear (UFA)
- The total number of GLS provided is to be determined based on enrolment projections
- Storage to be included within the GLS as cabinetry (min 6m² per GLS)

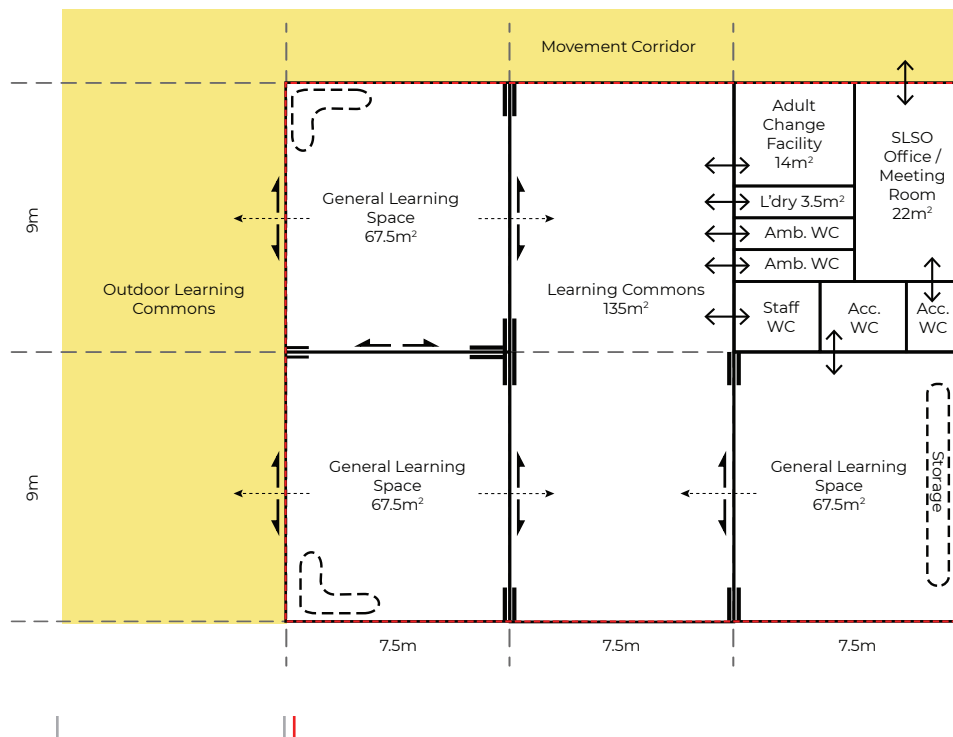
DRAFT



EXAMPLE LAYOUT

Example Hub Layout – School Infrastructure NSW, May 2021

	Small PS 230 students	Medium PS 550 students	Large PS 1,000 students
Number of GLS required	10 GLS + SLU (as required)	24 GLS + SLU (as required)	44 GLS + SLU (as required)
Number of LC required	3	6	11



Outdoor Learning Commons adjacent may be a desirable solution

Typical GLS hub



Support Learning Hub Primary and Secondary

Learning Commons

- This area may be divided into zones for practical activities, break out spaces, sensory rooms, therapy spaces, life skills spaces such as kitchens, and the like.
- Outdoor Learning Commons adjacent to the Support Learning Hub may be desirable as an alternate, quieter recreation space.
- Generous storage to be provided (as cabinetry) to allow for bulky mobility devices or medical equipment to be stored. Recommended to provide 8sqm for student personal effects and 6sqm lockable storage for teaching supplies within each GLS.
- Retreat zones may be included within the GLS to provide students with a safe space to move to if a situation is stressful or to self-manage emotions.

Student Amenities

- Student amenities have direct access from the Learning Commons with line of sight from 2 GLS spaces. This arrangement allows students to independently use sanitary facilities whilst maintaining passive supervision from staff.
- 1 GLS has direct access to an accessible sanitary facility to maintain a line of sight from all GLS spaces.
- An adult change facility provides for students with high support needs and students who might require additional space. Access can be provided from the Learning Commons and/or movement corridor.
- A unisex accessible sanitary facility, male and female ambulant facilities and a laundry to be provided also.

Staff Amenities

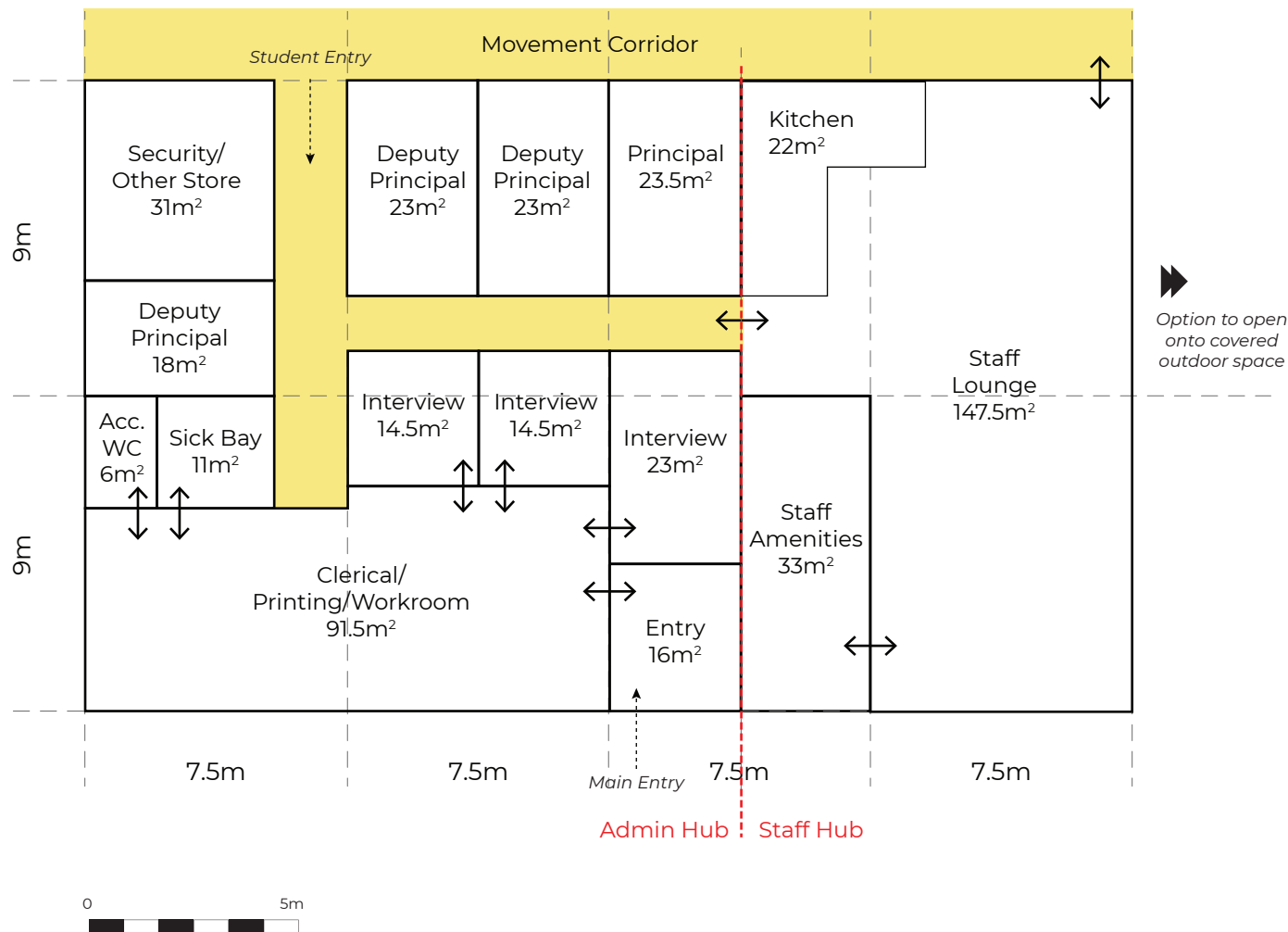
- An office for the School Learning Support Officer (SLSO) is provided for use during free periods, to undertake administrative tasks and store items, including confidential records.
- The SLSO Office also provides a private meeting space for parents.
- The SLSO Office also provides an opportunity for surveillance of the Support Unit entry / exit doors and common areas.
- Staff sanitary facilities have been within close proximity of the Support Hub.

Important note on support classes

The requirements of every support class will be different depending on the student profile and varying needs of the students who enroll at the school. For this reason, it is important that the standard design for support learning areas is as flexible as possible, and customised by way of zones (including furniture, fit out and equipment (FF&E)) to suit the needs of the students attending the school. These requirements may change year on year as new students come and go. The FF&E should be designed to allow flexibility and change with relative ease if required.

DRAFT

EXAMPLE LAYOUT



Administration and Staff Hub Primary (Large/Core 35)

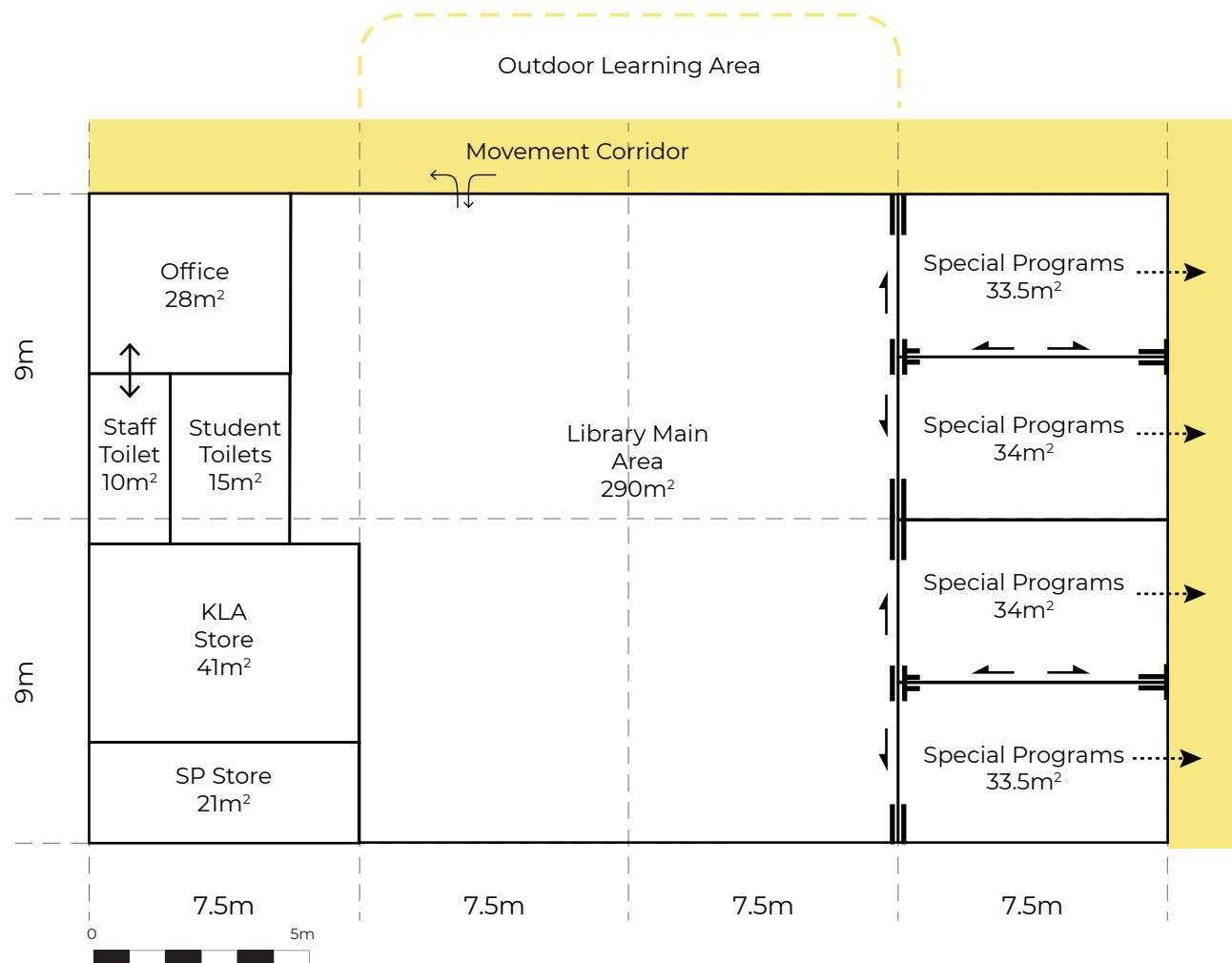
- Single entry/exit point to main library space to ensure security of students and assets (eg. books).
- Librarian loan/returns desk located near the main entry point with clear sight lines for efficient supervision of main library area.
- Office area to have direct access to staff toilets.
- Bag storage to be located at the entry to the main library space, without compromising circulation.
- Integration of Special Programs Unit with Library.
- Opportunity for shared use of Special Programs rooms with the community by providing access that is external to the main library area.
- Flexible use of Special Programs rooms provided - ability to open up adjoining rooms to create a larger space.
- Opportunity to create outdoor learning area adjacent to the library.

DRAFT



EXAMPLE LAYOUT

Example Hub Layout – School Infrastructure NSW, May 2021



Library Hub Primary (Large/Core 35)

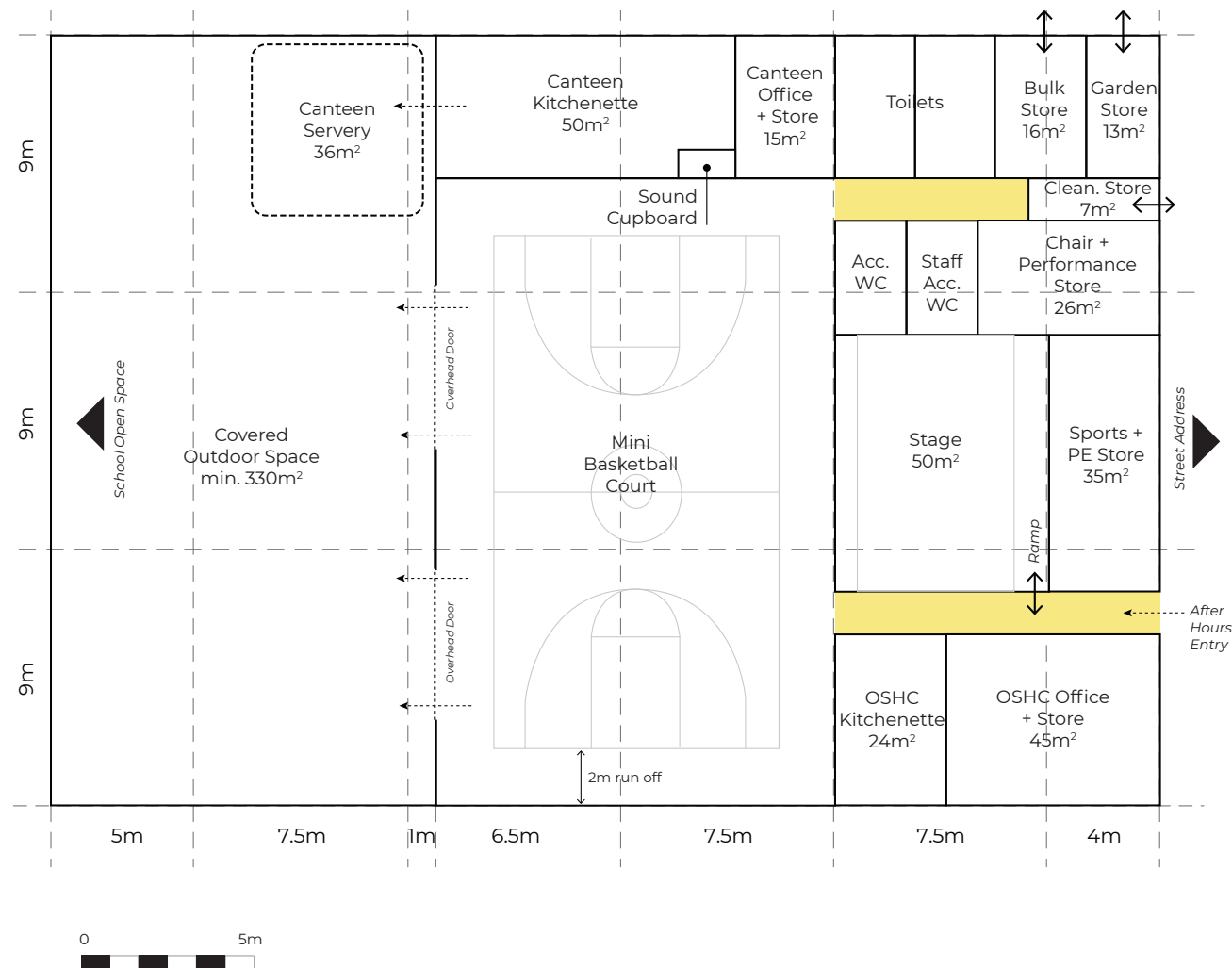
- Single entry/exit point to main library space to ensure security of students and assets (eg. books).
- Librarian loan/returns desk located near the main entry point with clear sight lines for efficient supervision of main library area.
- Office area to have direct access to staff toilets.
- Bag storage to be located at the entry to the main library space, without compromising circulation.
- Integration of Special Programs Unit with Library.
- Opportunity for shared use of Special Programs rooms with the community by providing access that is external to the main library area.
- Flexible use of Special Programs rooms provided - ability to open up adjoining rooms to create a larger space.
- Opportunity to create outdoor learning area adjacent to the library.

DRAFT



EXAMPLE LAYOUT

Example Hub Layout – School Infrastructure NSW, May 2021



Hall, Canteen + OSHC Hub Primary (Large/Core 35)

- The Hall, Canteen and Out of School Hours Care (OSHC) facilities are consolidated within a single hub, due to their favourable intersection of uses.
- The size of the main hall area allows for functional use as a mini basketball court, at 18m x 10m plus 2m run-off on all sides.
- The hub incorporates a stage which may be utilised for various events such as assemblies and performance. The stage requires disabled access via a ramp.
- Covered Outdoor Space (also referred to as COLA) is a desirable addition to the hub, and with the addition of large sectional overhead doors, it provides:
 - the opportunity to 'spill out' during whole of school assemblies and other large events that are held in the hall;
 - weather protected outdoor play area that may be utilised by the OSHC; and
 - covered area the canteen servery.
- The OSHC should have secure access outside of school hours from the school's main entry and/or car park.
- The canteen kitchenette provides servery windows than open into the main hall area, as well as out into the Covered Outdoor Space. A suitable route for deliveries to the canteen should be considered.
- Bulk, Garden & Cleaning stores have been integrated into the hub. These store areas require access from the perimeter of the hall and suitable access routes provided to ensure heavy and bulky items can be easily maneuvered in and out.

DRAFT



EXAMPLE LAYOUT

Example Hub Layout – School Infrastructure NSW, May 2021