



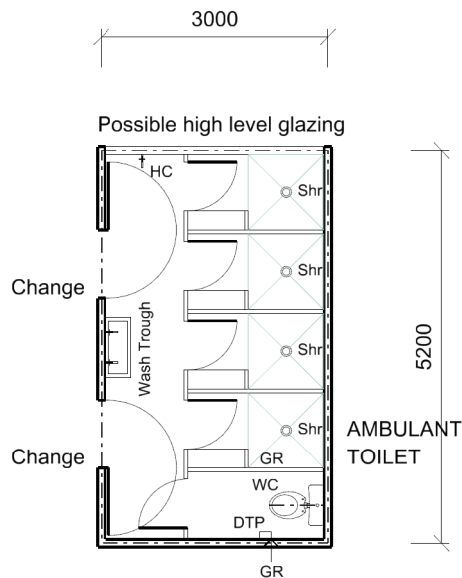
SCHOOL TYPE  
KEY LEARNING / SUPPORT AREA  
ROOM / SPACE  
TYPE / ID

Secondary  
Sports & Performance Unit  
Shower  
HS502.13

SCHEDULE AREA 15m<sup>2</sup>

#### NOTES

- 1 Hot Water System (HWS) can be located within area allocated for WC.
- 2 Hot Water System (HWS) NOT to be located in the Shower complex.



Floor Area shown 14.79 sq.m

#### FIXTURES

ID	QUANTITY
SHR	4
WT	1
WC	1
2 Ambulant	2
WC Grab rails	
DTP	1

1:100 @ A4 0 1 2 3 4m

REVISION DATE  
12 DECEMBER 2013

The information on this sheet once printed/exported is classed as an uncontrolled copy.  
The currency of the information should be checked by visiting the EFSG website prior to using the information for any purposes.