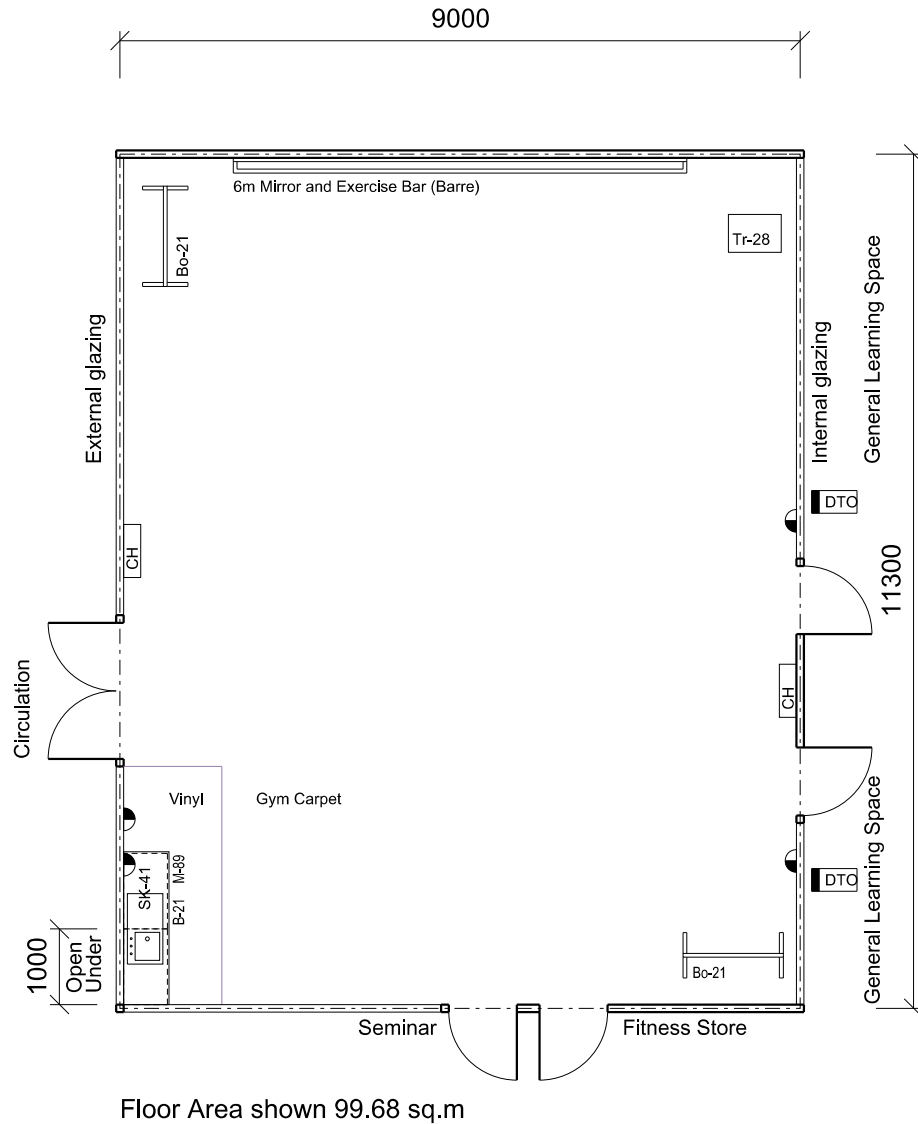




**SCHOOL TYPE**  
**KEY LEARNING / SUPPORT AREA**  
**ROOM / SPACE**  
**TYPE / ID**

Secondary  
Health/PE & Performing Arts Learning Unit  
Shared PE Fitness Laboratory with Wet Area  
HS408.01

**SCHEDULE AREA** 100m<sup>2</sup>



**FURNITURE**

ID	QUANTITY
B-21	2
Bo-21	2
M-89	1
SK-41	1
Tr-28	1

Furniture quantities are indicative and are related to the floor plan indicated. Actual furniture selection and quantities will be dependent on the approved design, specific school needs, student ages, student capabilities and their teachers.

**REVISION DATE**  
12 DECEMBER 2013

The information on this sheet once printed/exported is classed as an uncontrolled copy.  
The currency of the information should be checked by visiting the EFSG website prior to using the information for any purposes.

1:100 @ A4 0 1 2 3 4m